



# COLLABORATION

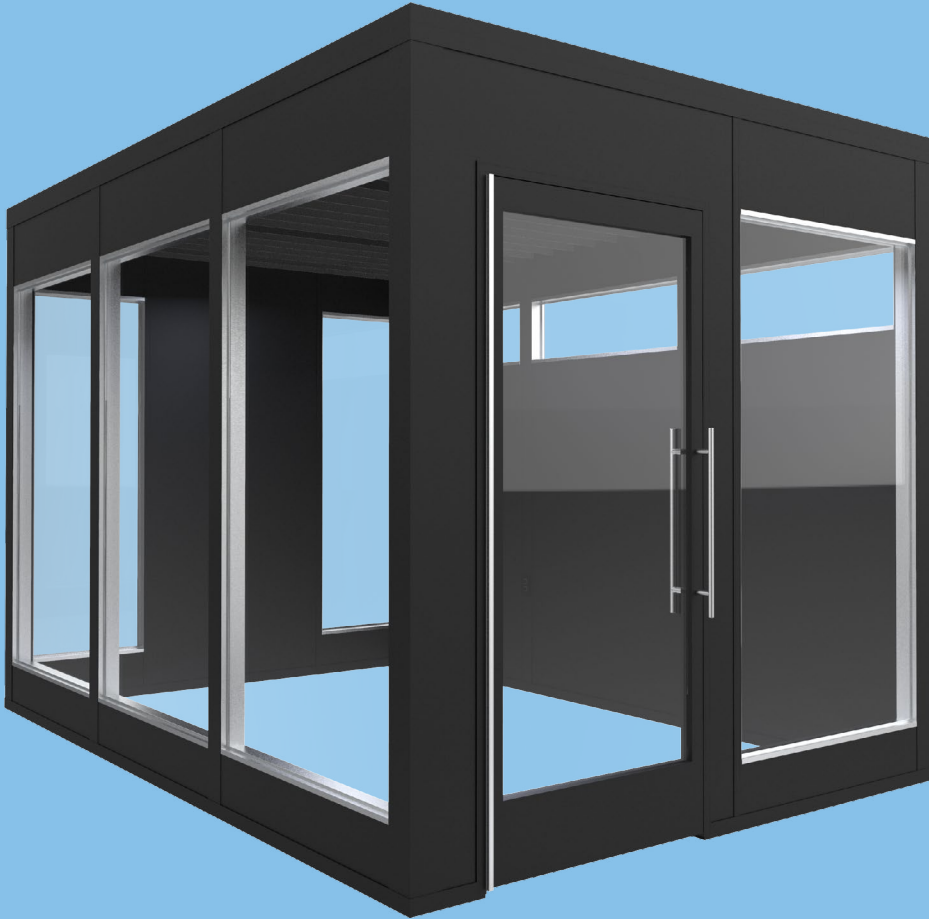
The Zonez 8' x12' Collaboration Privacy Suite with Array Ceiling is a free-standing meeting/conference room that accommodates up to eight occupants. The suite provides the highest level of visual and acoustical privacy by way of an engineered, modular wall system. The wall system can be configured to provide a Sound Transmission Class (or STC) of either 35 or 42.

Zonez Collaboration Suites do not include floors or flooring systems and require access to sufficient power to manage typical conference room requirements and equipment.

- All suites are made with recycled materials, which are good for you and good for our planet
- Installed as an open room with no furniture, giving you the freedom to select furnishings
- Endless custom color and printed rPET options allow you to make each suite your own
- Fast installation to minimize the disruption
- Choose your own wall and window configuration to fit your space, needs, and aesthetics
- You can feel confident with our 10-year warranty

8X12 STC35 COLLABORATION SUITE WITH ARRAY CEILING

# FEATURES



Each ADA Compliant suite meets all ADA standards for access and use and comes standard with a self-closing storefront glass door, sensor-activated lights and fan, and a built-in USB port for mobile device charging.

## GLAZING:

Fixed Type | 1/4" Laminated Safety

## DOOR TYPE:

3068 (36" x 80") Aluminum Storefront Type | Chrome Pull Handles

## LIGHTING:

Electrical outlet boxes provided for user installed lighting.

## POWER SUPPLY:

Units must be wired directly to a dedicated 120V AC via the junction box located atop the suite.

UL Classified US, CAN  
ASTM E84 PET Polyester Fiber Acoustic Panel US, CAN  
TB117 Smolder Resistance of Materials Test US, CAN



- STC 35 Rating, keeps your concentration level high and your conversations private
- Open, Array Ceiling allows for user installed lighting options.
- Built-in power outlets and USB ports ensure your devices stay as charged as you are
- Automatic, soft-closing door keeps your ideas in, and noisy office discussions out

# DIMENSIONS

## EXTERIOR:

W: 96", D: 144", H: 96"  
W: 243.84 CM, D: 365.76 CM, H: 243.84 CM

## INTERIOR:

W: 89", D: 137", H: 90"  
W: 226.06 CM, D: 347.98 CM, H: 228.6 CM

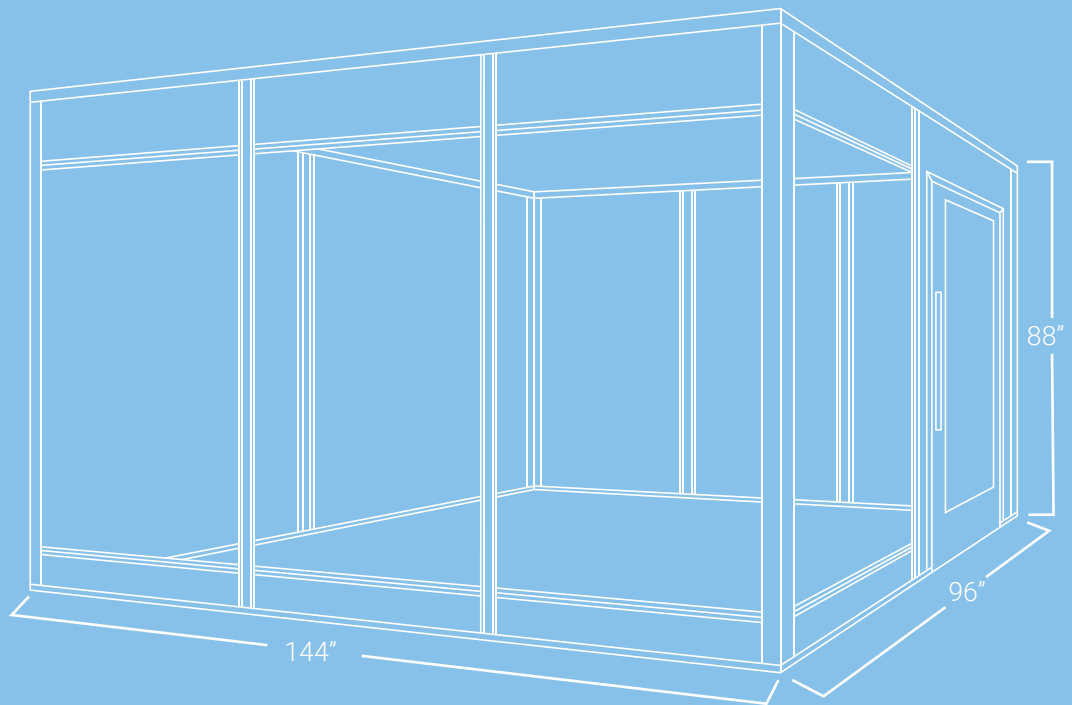
## UNIT WEIGHTS:

Shipping  
1230lbs., 557.917Kg.

Assembled  
930lbs., 421.84Kg.

## OCCUPANCY:

Up to Eight People



8X12 STC35 COLLABORATION SUITE WITH ARRAY CEILING

# CEILING



## ARRAY CEILING

The 8' x 12' STC 42 Collaboration Suite with Array Ceiling features an open overhead design. The non-enclosed roof allows unrestricted airflow as well as the use of existing fire suppression and lighting.

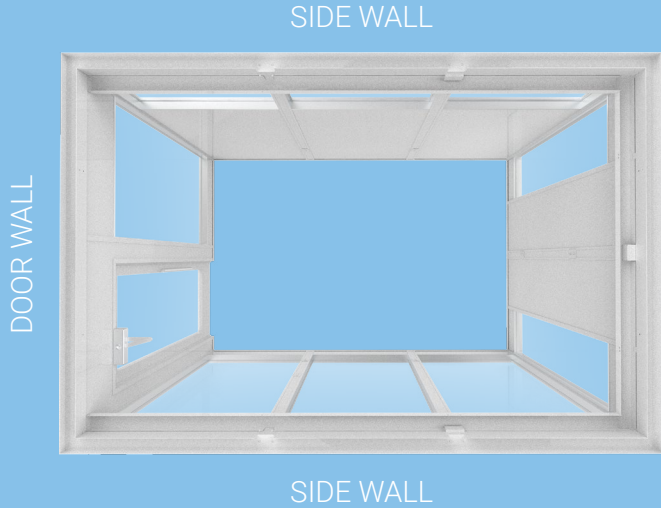
The array is built with PET (Polyethylene Terephthalate) panels. PET is manufactured from recycled plastic water and soda bottles, making the array ceiling both aesthetically pleasing and environmentally friendly.

# CONFIGURATIONS

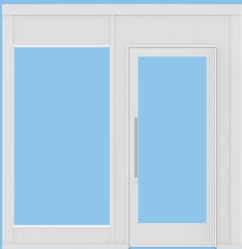
## ENDLESS POSSIBILITIES:

The versatile 8'x12' Collaboration Suite offers users a nearly unlimited number of configurations.

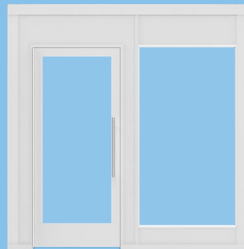
With optional full length windows to fully enclosed walls, the unit can be arranged to fit your unique needs and setting.



## DOOR WALL:

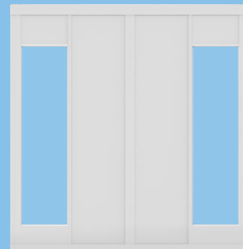


Right-Handed Door

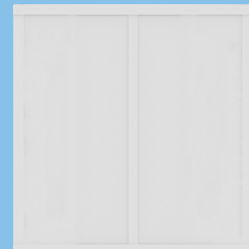


Left-Handed Door

## REAR WALL:

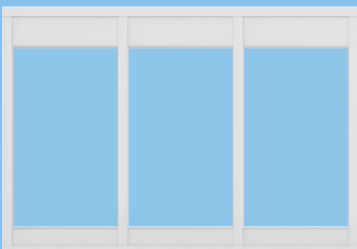


Windows

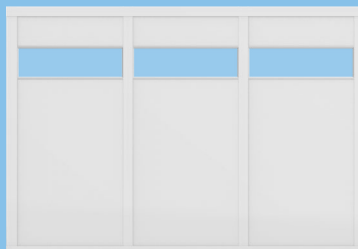


Solid Walls

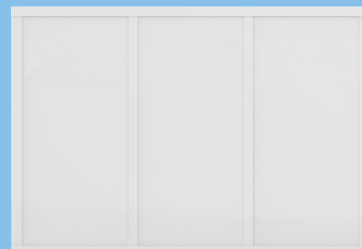
## SIDE WALLS:



Full Windows



Clerestory Windows



Solid Wall

# OPTIONS

## FRAME & DOOR COLORS



CL-CLEAR SATIN



SW-WHITE



BL-BLACK

\*Finishes available on both doors and frames

## WALL PANEL COLORS - EXTERIOR



C05-BRUSHED SILVER



C02-WHITE

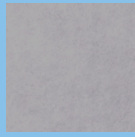


C90-BLACK

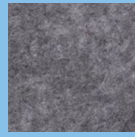
## WALL PANEL PET COLORS - INTERIOR



P93-WHITE



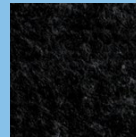
P91-LT GRAY



P92-MED GRAY



P02-DARK GRAY



P01-BLACK



\*CC2-CUSTOM PRINT



\*CC1-PANTONE

8X12 STC35 COLLABORATION SUITE WITH ARRAY CEILING

# GET IN TOUCH

## ZONEZ

642 W Nicholas Ave  
Orange CA. 92868

sales@zonez.com  
(800) 929-7702